

Purchase a new townhome today

with just  
**\$5k**  
deposit

and receive a  
**12**  
month rental  
guarantee\*

# Crafted.

TOWNHOMES BY

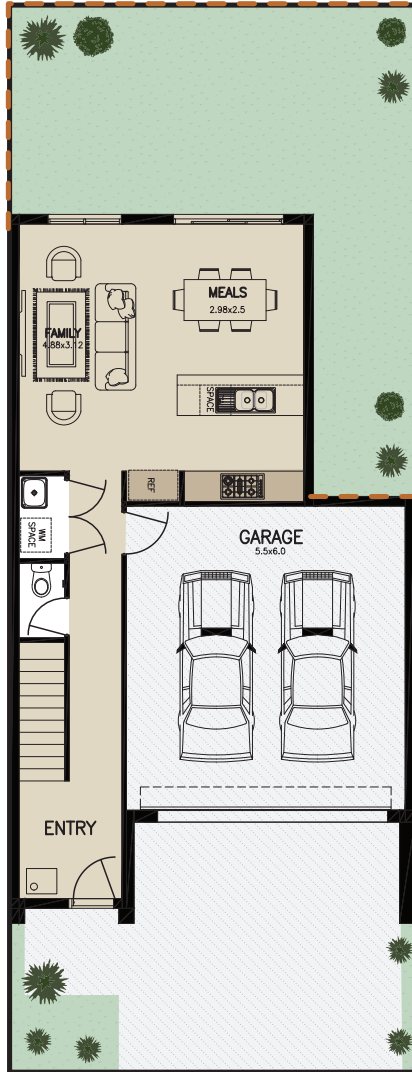
**merrifield**

**NOSTRA**

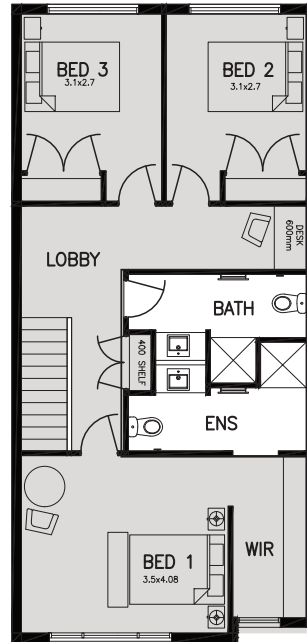
**Lot 3826**



**\$419,000**



Ground Floor



First Floor

|                  |                            |
|------------------|----------------------------|
| Ground Floor     | 52.40m <sup>2</sup>        |
| Garage           | 37.42m <sup>2</sup>        |
| First Floor      | 75.14m <sup>2</sup>        |
| <b>Total</b>     | <b>164.96m<sup>2</sup></b> |
| <b>Land Area</b> | <b>168m<sup>2</sup></b>    |

|            |              |
|------------|--------------|
| Master Bed | 3.5 x 4.08m  |
| Bed 2      | 3.1 x 2.7m   |
| Bed 3      | 3.1 x 2.7m   |
| Family     | 4.88 x 3.12m |
| Meals      | 2.98 x 2.5m  |



**MAB gpc**

[merrifieldmelbourne.com.au](http://merrifieldmelbourne.com.au)

The information contained herein has been prepared by MAB Corporation Pty Ltd and Merrifield Corporation Pty Ltd and Ascotown Pastoral Company Pty Ltd in good faith and with due care and is for promotional purposes only. MAB and Merrifield do not warrant the accuracy of any information contained herein and does not accept any liability for any error or discrepancy or negligence or otherwise. The information contained herein does not constitute all, or any part of an offer, lease, agreement to lease or contract of sale for any property referred to. Any details of the project/s, artistic impressions or perspective drawings used herein represent the current intentions and MAB and Merrifield do not warrant or represent that the project/s will be developed in accordance with those details. Due to market, regulatory or other reasons, MAB and/or Merrifield may alter the planning for the project including configuration, mass, height, bulk or uses for the project, and project details, specifications and timings are subject to change.

\*This Promotion only applies for a limited time and is subject to terms and conditions and eligibility criteria, full details of which are available at [merrifieldmelbourne.com.au/crafted](http://merrifieldmelbourne.com.au/crafted) or on request from Merrifield. All matters (including the promotion period, the amount and any other matters relating to this Promotion) are subject to change without notice at Merrifield's absolute discretion. This does not form part of any contract and purchasers should review the contract carefully, make their own inquiries and obtain independent financial and legal advice before proceeding with any purchase.