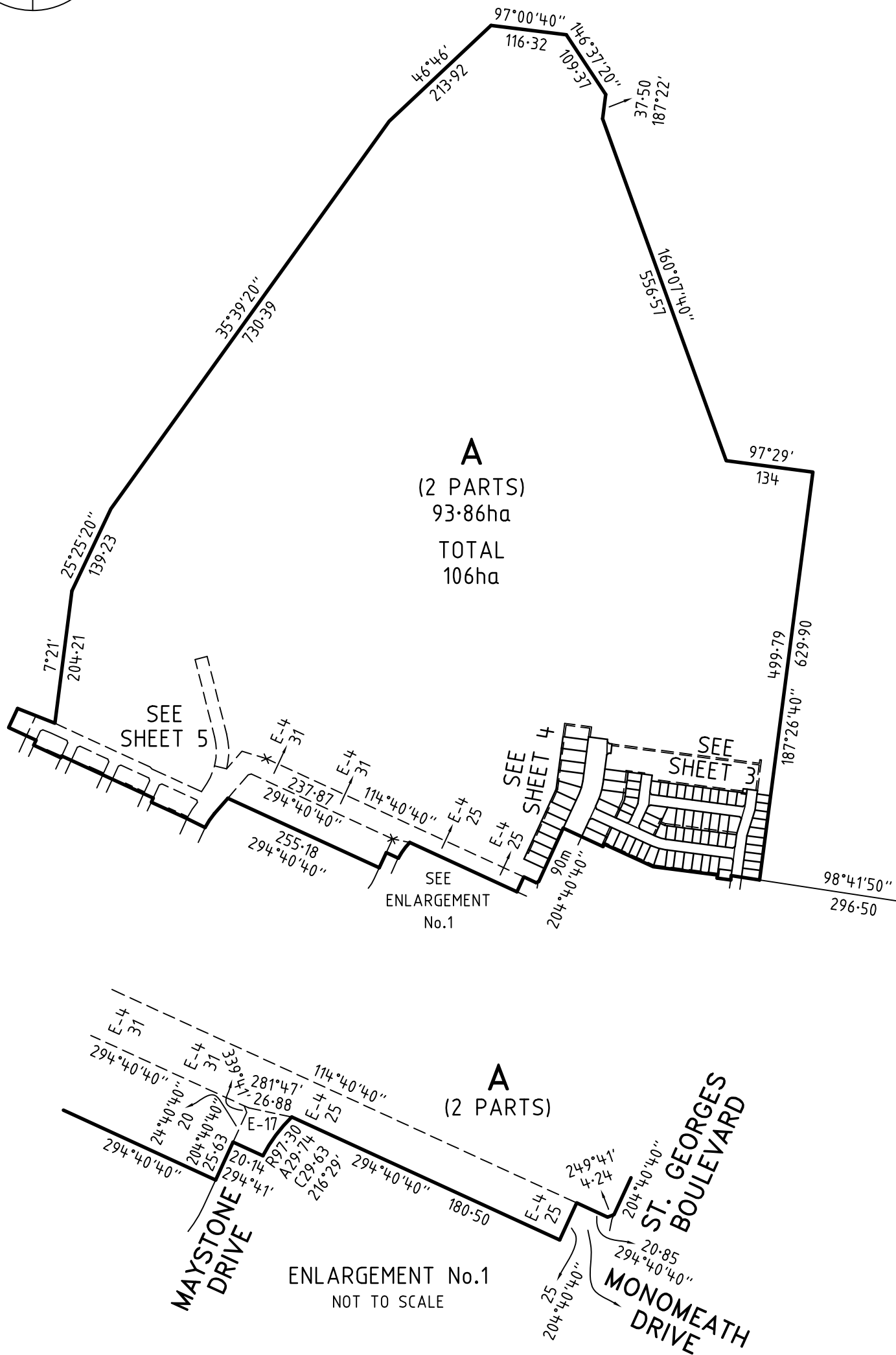


PLAN OF SUBDIVISION				EDITION		PS 845588X	
<div>LOCATION OF LAND</div> <div>PARISH: MICKLEHAM</div> <div>TOWNSHIP: -</div> <div>SECTION: -</div> <div>CROWN ALLOTMENT: -</div> <div>CROWN PORTION: 25, 26 &amp; 28 (PARTS)</div> <div>TITLE REFERENCE: VOL FOL</div> <div>LAST PLAN REFERENCE: LOT R ON PS835650C</div> <div>POSTAL ADDRESS: (at time of subdivision) DONNYBROOK ROAD MICKLEHAM 3064</div> <div>MGA 94 CO-ORDINATES: (approx. centre of land in plan) E 315 330 N 5 844 850 ZONE: 55</div>							
VESTING OF ROADS AND/OR RESERVES				NOTATIONS			
IDENTIFIER		COUNCIL/BODY/PERSON		STAGING		THIS IS NOT A STAGED SUBDIVISION PLANNING PERMIT NO. P21549	
ROAD R1 RESERVE No.1		HUME CITY COUNCIL JEMENA ELECTRICITY NETWORKS (VIC) LTD		<div>SURVEY</div> <div>THIS PLAN IS <del>NOT</del> BASED ON SURVEY VIDE BP3204G</div> <div>THIS SURVEY HAS BEEN CONNECTED TO PERMANENT MARKS NO(S) PM</div> <div>IN PROCLAIMED SURVEY AREA NO. AREA 74 11, 21, 222 &amp; 289 (MICKLEHAM) 4, 5, 39 &amp; 70 (KALKALLO)</div> <div>DEPTH LIMITATION DOES NOT APPLY</div>			
<div>OTHER PURPOSE OF PLAN</div> <div>TO REMOVE THE WHOLE OF DRAINAGE EASEMENT E-9 ON PS814703B (NOW CONTAINED IN ST. GEORGES BOULEVARD, SUNNYSIDE DRIVE, WYUNA WAY, VALETTA STREET AND LOTS 4022, 4023, 4026 TO 4035 (BOTH INCLUSIVE), 4037 &amp; 4038 ON THIS PLAN).</div> <div>LAND SUBDIVIDED - 4.603ha</div> <div>LOTS 1 TO 4000 (BOTH INCLUSIVE) HAVE BEEN OMITTED FROM THIS PLAN.</div> <div>EASEMENTS E-8, E-9 AND E-11 TO E-14 (BOTH INCLUSIVE) HAVE BEEN OMITTED FROM THIS PLAN.</div> <div>TANGENT POINTS ARE SHOWN THUS:</div>				<div>LAND SUBDIVIDED - 4.603ha</div> <div>LOTS 1 TO 4000 (BOTH INCLUSIVE) HAVE BEEN OMITTED FROM THIS PLAN.</div> <div>EASEMENTS E-8, E-9 AND E-11 TO E-14 (BOTH INCLUSIVE) HAVE BEEN OMITTED FROM THIS PLAN.</div> <div>TANGENT POINTS ARE SHOWN THUS:</div>			
OTHER PURPOSE OF PLAN							
TO REMOVE THE WHOLE OF DRAINAGE EASEMENT E-9 ON PS814703B (NOW CONTAINED IN ST. GEORGES BOULEVARD, SUNNYSIDE DRIVE, WYUNA WAY, VALETTA STREET AND LOTS 4022, 4023, 4026 TO 4035 (BOTH INCLUSIVE), 4037 & 4038 ON THIS PLAN).							
LAND SUBDIVIDED - 4.603ha							
LOTS 1 TO 4000 (BOTH INCLUSIVE) HAVE BEEN OMITTED FROM THIS PLAN.							
EASEMENTS E-8, E-9 AND E-11 TO E-14 (BOTH INCLUSIVE) HAVE BEEN OMITTED FROM THIS PLAN.							
TANGENT POINTS ARE SHOWN THUS:							
EASEMENT INFORMATION							
LEGEND: E - ENCUMBERING EASEMENT, CONDITION IN CROWN GRANT IN THE NATURE OF AN EASEMENT OR OTHER ENCUMBRANCE A - APPURTENANT EASEMENT							
SUBJECT LAND	PURPOSE	WIDTH (metres)	ORIGIN	LAND BENEFITED/IN FAVOUR OF			
E-1	DRAINAGE	SEE DIAG	AS360841M	HUME CITY COUNCIL			
E-2	DRAINAGE	SEE DIAG	AR183960X	HUME CITY COUNCIL			
E-3	SEWERAGE	SEE DIAG	AS360841M	YARRA VALLEY WATER CORPORATION			
E-4 E-4	DRAINAGE DRAINAGE	SEE DIAG SEE DIAG	AS360841M AS360841M	HUME CITY COUNCIL YARRA VALLEY WATER CORPORATION			
E-5	DRAINAGE	SEE DIAG	THIS PLAN	HUME CITY COUNCIL			
E-6	SEWERAGE	SEE DIAG	THIS PLAN	YARRA VALLEY WATER CORPORATION			
E-7 E-7	DRAINAGE SEWERAGE	SEE DIAG SEE DIAG	THIS PLAN THIS PLAN	HUME CITY COUNCIL YARRA VALLEY WATER CORPORATION			
E-10	SEWERAGE	SEE DIAG	PS814703B	YARRA VALLEY WATER CORPORATION			
E-15	DRAINAGE	SEE DIAG	PS835648N	HUME CITY COUNCIL			
E-16	SEWERAGE	SEE DIAG	PS835648N	YARRA VALLEY WATER CORPORATION			
E-17 E-17	DRAINAGE SEWERAGE	SEE DIAG SEE DIAG	PS835648N PS835648N	HUME CITY COUNCIL YARRA VALLEY WATER CORPORATION			
MERRIFIELD - 40		LICENSED SURVEYOR GREGORY STUART WILLIAMS					
80 LOTS AND BALANCE LOT A							
<div>Level 3, 1 Southbank Boulevard Southbank, Victoria 3006 03) 7019 8400 www.veris.com.au</div> <div>DEVELOP WITH CONFIDENCE™</div> <div>Formerly <b>Bosco Jonson</b></div> <div>veris</div>		DATE 17/12/20		REFERENCE 329005-ST40		ORIGINAL SHEET SIZE A3	
		VERSION D		DRAWING 329005-ST40-AD		SHEET 1 OF 7 SHEETS	

**PS 845588X**



REFERENCE	329005-ST40
DRAWING	329005-ST40-AD

ORIGINAL SHEET SIZE A3

SHEET 2

**PS 845588X**



97°26'40"  
227.50  
— — —

SEE SHEET 2

4067  
263m<sup>2</sup>  
97°26'40"

7:22	12:5	4068	263m <sup>2</sup>	97°26'40"	12:50
68	21	4068			

14.21 23.16 4070 341m<sup>2</sup> 14

25-58  
4071  
375m<sup>2</sup>  
°26'40" 28  
14  
187°26'40'

40.36  
350m<sup>2</sup>  
26'40" 28  
12:50

038  
50m<sup>2</sup>  
12.50

039  
10m<sup>2</sup>  
0" 28  
12:50

SEE SHEET 2  
98°41'50"

A  
PARTS)

ARTS)

187° 27' 2"

4066

E-6  
2:50

7° 26' 40"

RESERVE No.1

38.4m<sup>2</sup>

6° 20'

(14.25)

E-6  
2

6° 20'

187° 27' 2"

ENLARGEMENT No.2  
NOT TO SCALE

ENLARGEMENT No.2  
NOT TO SCALE

**SCALE**  
1:750

7.5      0                      15                      30

LENGTHS ARE IN METRES



DEVELOP  
WITH \_\_\_\_\_  
CONFIDENCE™

www.veris.com.au  
Formerly  
*Bosco Jonson*

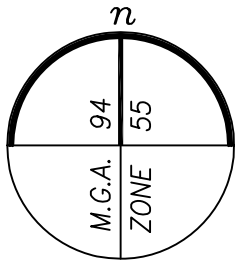
REFERENCE	329005-ST40
DRAWING	329005-ST40-AD

ORIGINAL SHEET SIZE A3

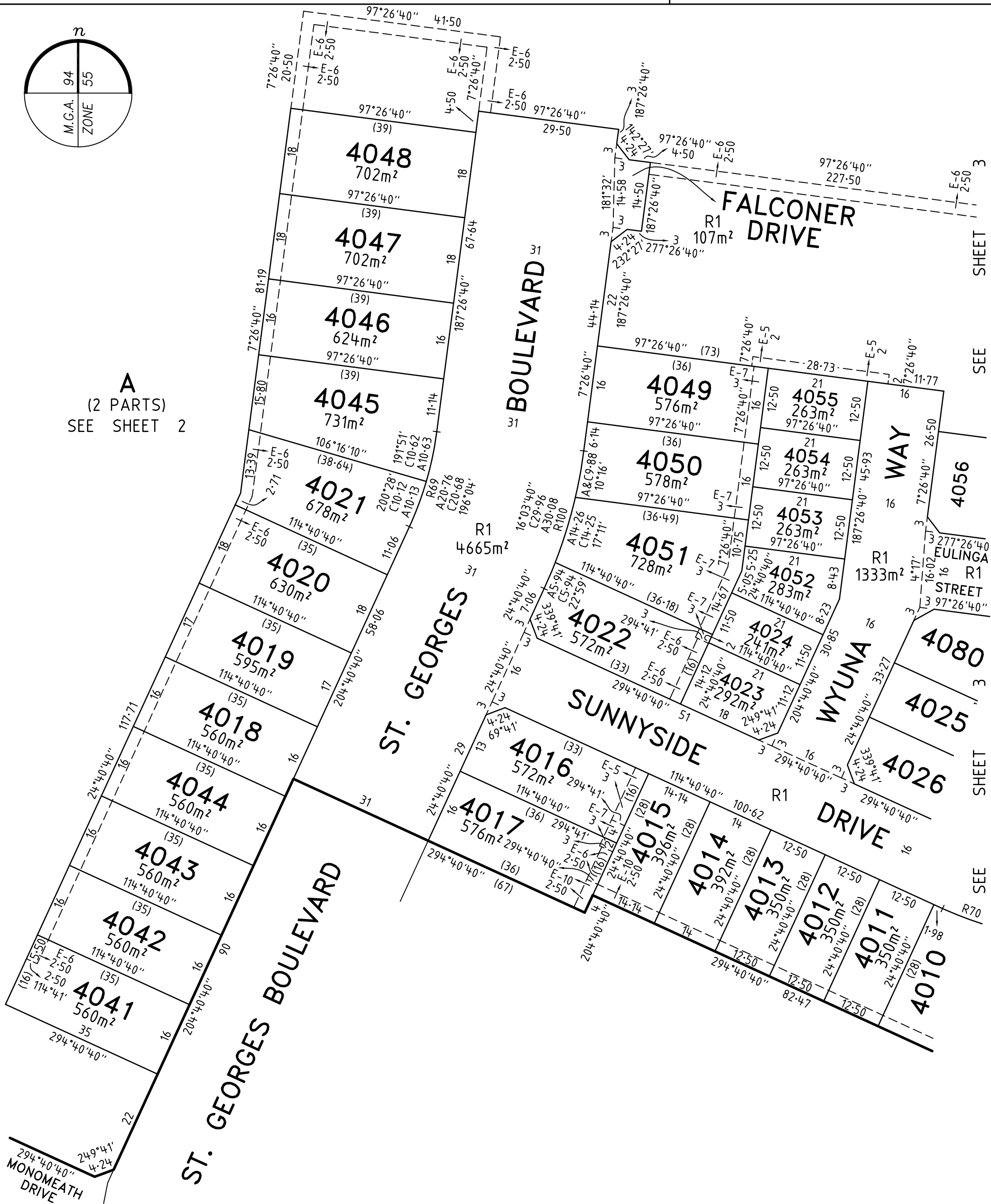
**SHEET**      **3**

PLAN OF SUBDIVISION

PS 845588X



A  
(2 PARTS)  
SEE SHEET 2



SHEET

SEE

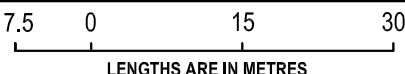
SHEET

SEE

MERRIFIELD - 40

LICENSED SURVEYOR GREGORY STUART WILLIAMS

SCALE  
1:750



Level 3, 1 Southbank Boulevard  
Southbank, Victoria 3006  
03) 7019 8400  
www.veris.com.au



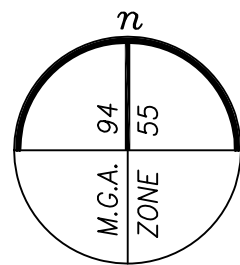
DEVELOP WITH CONFIDENCE™  
Formerly  
Bosco Jonson

DATE 17/12/20  
VERSION D

REFERENCE 329005-ST40  
DRAWING 329005-ST40-AD

ORIGINAL SHEET SIZE A3  
SHEET 4

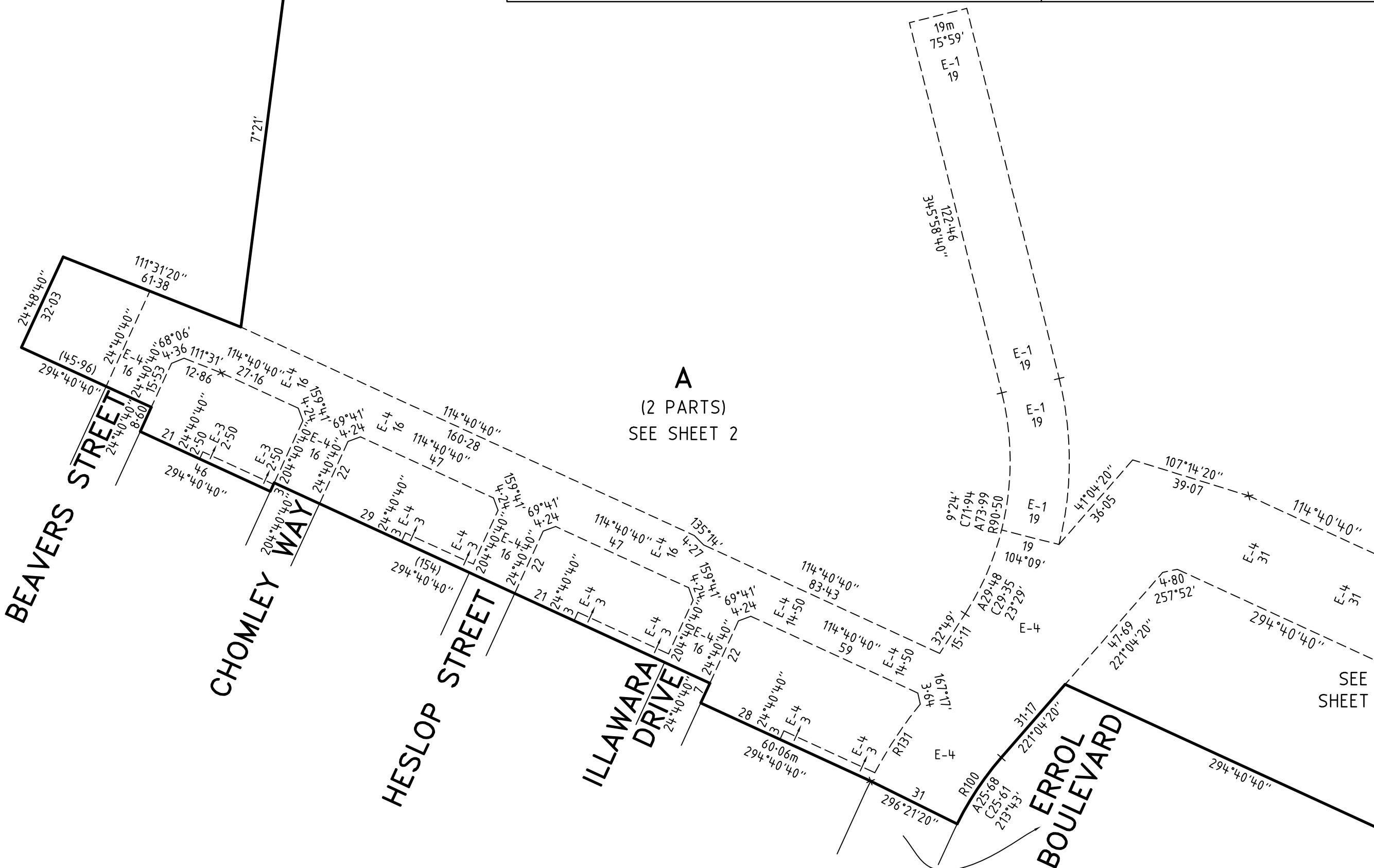




SEE SHEET 2

PLAN OF SUBDIVISION

PS 845588X



Level 3, 1 Southbank Boulevard  
Southbank, Victoria 3006  
03) 7019 8400  
www.veris.com.au  
DEVELOP WITH CONFIDENCE™  
Formerly **Bosco Jonson**

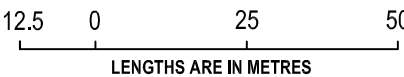


MERRIFIELD - 40

LICENSED SURVEYOR GREGORY STUART WILLIAMS

DATE 17/12/20  
VERSION D

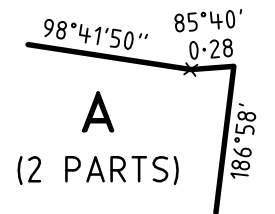
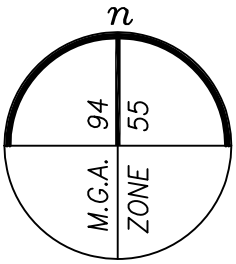
REFERENCE 329005-ST40  
DRAWING 329005-ST40-AD



SCALE  
1:1250

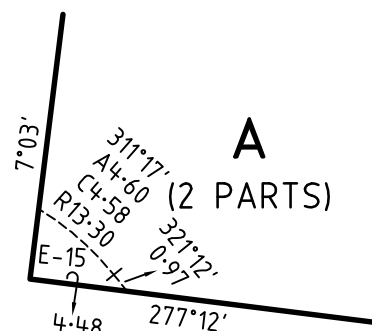
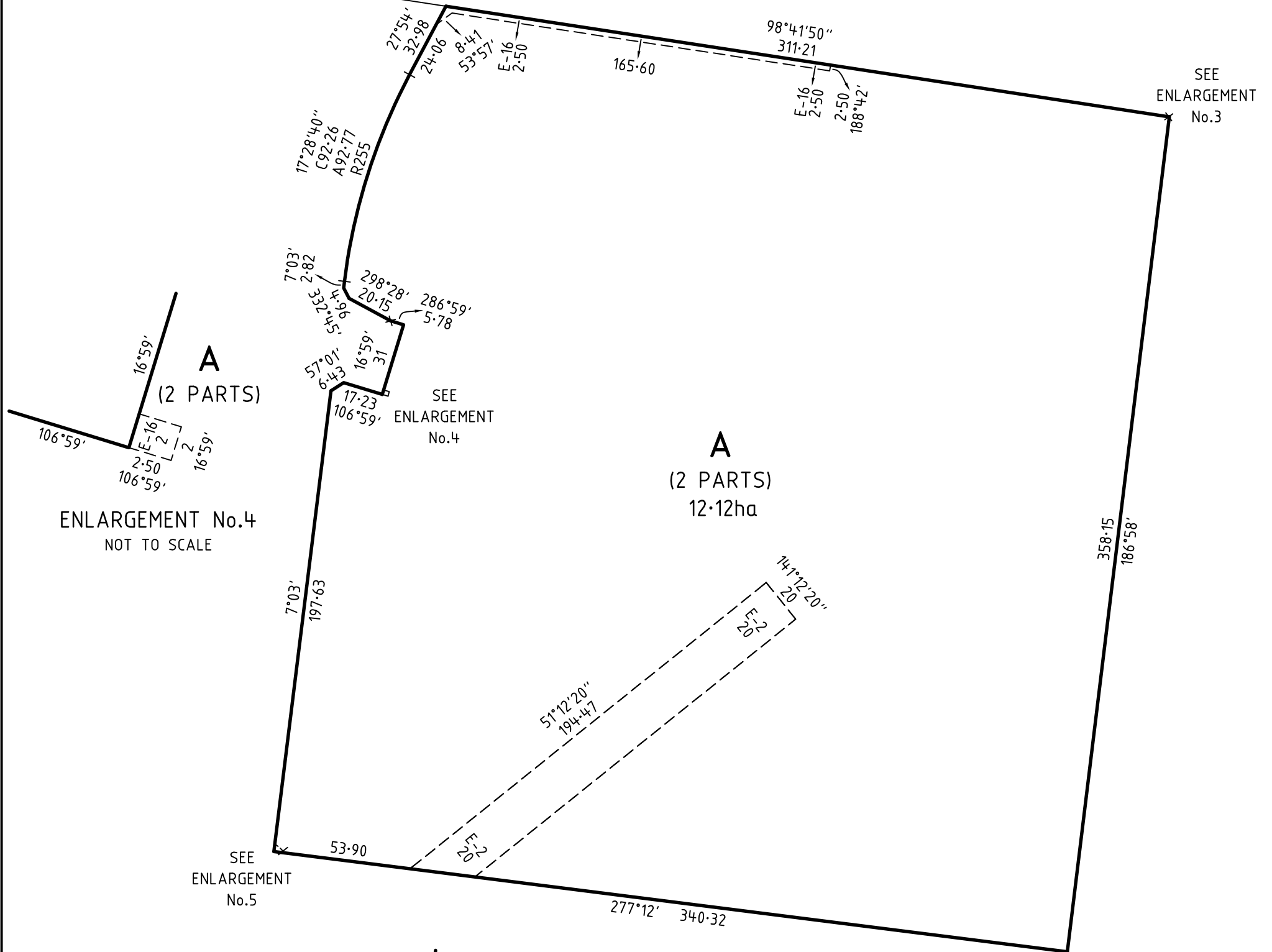
ORIGINAL SHEET SIZE A3  
SHEET 5

**PS 845588X**



ENLARGEMENT No.3  
NOT TO SCALE

SEE SHEET 2

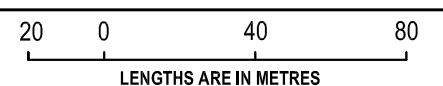


ENLARGEMENT No.5  
NOT TO SCALE

**MERRIFIELD - 40**

**LICENSED SURVEYOR GREGORY STUART WILLIAMS**

**SCALE**  
1:2000



Level 3, 1 Southbank Boulevard  
Southbank, Victoria 3006  
03) 7019 8400  
www.veris.com.au

DEVELOP  
WITH \_\_\_\_\_  
CONFIDENCE™

www.veris.com.au  
Formerly  
*Bosco Jonson*



DATE	17/12/20
VERSION	D

REFERENCE	329005-ST40
DRAWING	329005-ST40-AD

ORIGINAL SHEET SIZE A3

**SHEET 6**

CREATION OF RESTRICTION A

THE REGISTERED PROPRIETORS OF THE BURDENED LAND COVENANT WITH THE REGISTERED PROPRIETORS OF THE BENEFITED LAND AS SET OUT IN THE RESTRICTION WITH THE INTENT THAT THE BURDEN OF THE RESTRICTION RUNS WITH AND BINDS THE BURDENED LAND AND THE BENEFIT OF THE RESTRICTION IS ANNEXED TO AND RUNS WITH THE BENEFITED LAND.

TABLE OF LAND BURDENED AND LAND BENEFITED

BURDENED LOT No.	BENEFITING LOTS ON THIS PLAN	BURDENED LOT No.	BENEFITING LOTS ON THIS PLAN	BURDENED LOT No.	BENEFITING LOTS ON THIS PLAN
4002	4001, 4003, 4035, 4039	4019	4016, 4017, 4018, 4020	4047	4045, 4046, 4048, 4049
4003	4001, 4002, 4004, 4033, 4034	4020	4016, 4019, 4021, 4022	4048	4045, 4046, 4047, 4049
4004	4003, 4005, 4032, 4033	4021	4020, 4022, 4045, 4051	4049	4045, 4046, 4050, 4054, 4055
4005	4004, 4006, 4031, 4032	4022	4016, 4021, 4023, 4024, 4051	4050	4021, 4045, 4049, 4051, 4053, 4054
4006	4005, 4007, 4030, 4031	4025	4023, 4024, 4026, 4027, 4079, 4080	4051	4021, 4022, 4024, 4050, 4052, 4053
4007	4006, 4008, 4029, 4030	4026	4012, 4023, 4025, 4027	4070	4068, 4069, 4071, 4072
4008	4007, 4009, 4028, 4029	4036	4035, 4037, 4071, 4072	4071	4035, 4036, 4070, 4072
4009	4008, 4010, 4027, 4028	4037	4002, 4035, 4036, 4038	4072	4035, 4066, 4070, 4073
4010	4009, 4011, 4026, 4027	4038	4002, 4035, 4037, 4039	4073	4033, 4034, 4064, 4065, 4072, 4074
4011	4010, 4012, 4026, 4027	4039	4001, 4002, 4038, 4040	4074	4032, 4033, 4063, 4064, 4073, 4075
4012	4011, 4013, 4010, 4027	4040	4001, 4002, 4038, 4039	4075	4031, 4032, 4062, 4063, 4074, 4076
4013	4012, 4014, 4023, 4026	4041	4018, 4042, 4043, 4044	4076	4030, 4031, 4061, 4062, 4075, 4077
4014	4013, 4015, 4023, 4026	4042	4018, 4041, 4043, 4044	4077	4029, 4030, 4060, 4061, 4075, 4077
4015	4014, 4016, 4017, 4022, 4023	4043	4018, 4041, 4042, 4043	4078	4028, 4029, 4059, 4060, 4077, 4079
4016	4015, 4017, 4019, 4022	4044	4018, 4019, 4042, 4043	4079	4025, 4027, 4028, 4058, 4078, 4080
4017	4015, 4016, 4018, 4019	4045	4021, 4046, 4049, 4050	4080	4025, 4052, 4056, 4079
4018	4016, 4017, 4019, 4044	4046	4045, 4047, 4049, 4050		

RESTRICTION:

1.

THE BURDENED LAND CANNOT BE USED EXCEPT IN ACCORDANCE WITH THE PROVISIONS RECORDED IN MCP ..... AND;

2.

THE REGISTERED PROPRIETOR OF THE BURDENED LOT MUST NOT BUILD OR PERMIT TO BE BUILT OR REMAIN ON THE LOT ANY BUILDING OR STRUCTURE OTHER THAN A BUILDING THAT HAS BEEN CONSTRUCTED IN ACCORDANCE WITH PLANS, DRAWINGS, DESIGNS AND SPECIFICATIONS THAT HAVE FIRST BEEN APPROVED BY THE MERRIFIELD LIVING DESIGN REVIEW COMMITTEE IN ACCORDANCE WITH THE "MERRIFIELD LIVING DESIGN GUIDELINES" AS AMENDED FROM TIME TO TIME.

EXPIRY DATE: 01/01/2041.

CREATION OF RESTRICTION B

THE REGISTERED PROPRIETORS OF THE BURDENED LAND COVENANT WITH THE REGISTERED PROPRIETORS OF THE BENEFITED LAND AS SET OUT IN THE RESTRICTION WITH THE INTENT THAT THE BURDEN OF THE RESTRICTION RUNS WITH AND BINDS THE BURDENED LAND AND THE BENEFIT OF THE RESTRICTION IS ANNEXED TO AND RUNS WITH THE BENEFITED LAND.

TABLE OF LAND BURDENED AND LAND BENEFITED

BURDENED LOT SUBJECT TO THE 'SMALL LOT HOUSING CODE (TYPE A)'	BENEFITING LOTS ON THIS PLAN	BURDENED LOT SUBJECT TO THE 'SMALL LOT HOUSING CODE (TYPE A)'	BENEFITING LOTS ON THIS PLAN
4001	4002, 4003, 4039, 4040	4055	4049, 4053, 4054, 4056
4023	4015, 4022, 4024, 4026	4056	4053, 4054, 4057, 4080
4024	4022, 4023, 4025, 4026, 4051, 4052	4057	4056, 4058, 4079, 4080
4027	4009, 4010, 4025, 4026, 4028, 4079	4058	4057, 4059, 4079, 4080
4028	4008, 4009, 4027, 4029, 4078, 4079	4059	4058, 4060, 4078, 4079
4029	4007, 4008, 4028, 4030, 4077, 4078	4060	4059, 4061, 4077, 4078
4030	4006, 4007, 4029, 4031, 4076, 4077	4061	4060, 4062, 4076, 4077
4031	4005, 4006, 4030, 4032, 4075, 4076	4062	4061, 4063, 4075, 4076
4032	4004, 4005, 4031, 4033, 4074, 4075	4063	4062, 4064, 4074, 4075
4033	4003, 4004, 4032, 4034, 4073, 4074	4064	4063, 4065, 4073, 4074
4034	4002, 4003, 4033, 4035, 4073	4065	4064, 4066, 4072, 4073
4035	4002, 4034, 4037, 4072	4066	4065, 4067, 4068, 4072
4052	4024, 4051, 4053, 4056, 4080	4067	4066, 4068, 4069, 4072
4053	4050, 4051, 4052, 4054, 4056, 4080	4068	4066, 4067, 4069, 4072
4054	4049, 4050, 4052, 4053, 4055, 4056	4069	4066, 4068, 4070, 4072

RESTRICTION:

THE REGISTERED PROPRIETOR OR PROPRIETORS FOR THE TIME BEING FOR ANY BURDENED LOT ON THIS PLAN IN THE TABLE AS A LOT SUBJECT TO THE 'SMALL LOT HOUSING CODE (TYPE A)' MUST NOT BUILD OR PERMIT TO BE BUILT OR REMAIN ON THE LOT ANY BUILDING OR STRUCTURE THAT HAS NOT BEEN CONSTRUCTED IN ACCORDANCE WITH:

1.

THE 'SMALL LOT HOUSING CODE (TYPE A)' UNLESS IN ACCORDANCE WITH A PERMIT GRANTED TO CONSTRUCT A DWELLING ON THE LOT;

2.

THE PLANS, DRAWING DESIGNS AND SPECIFICATIONS THAT HAVE FIRST BEEN APPROVED BY THE MERRIFIELD DESIGN REVIEW COMMITTEE IN ACCORDANCE WITH THE "MERRIFIELD LIVING DESIGN GUIDELINES" AS AMENDED FROM TIME TO TIME.

EXPIRY DATE: 01/01/2026.

CREATION OF RESTRICTION C

THE REGISTERED PROPRIETORS OF THE BURDENED LAND COVENANT WITH THE REGISTERED PROPRIETORS OF THE BENEFITED LAND AS SET OUT IN THE RESTRICTION WITH THE INTENT THAT THE BURDEN OF THE RESTRICTION RUNS WITH AND BINDS THE BURDENED LAND AND THE BENEFIT OF THE RESTRICTION IS ANNEXED TO AND RUNS WITH THE BENEFITED LAND.

TABLE OF LAND BURDENED AND LAND BENEFITED

BURDENED LOT No.	BENEFITING LOTS ON THIS PLAN
4016	4015, 4017, 4023, 4033
4022	4016, 4017, 4021, 4023

RESTRICTION:

THE REGISTERED PROPRIETOR OF THE BURDENED LOT FOR THE TIME BEING MUST NOT BUILD OR PERMIT TO BE BUILT OR REMAIN ON THE LOT A SINGLE STOREY DWELLING.

EXPIRY DATE: 01/01/2041.