

- NOTES:
1.

ALL EXISTING SERVICES UNDER NEW PAVEMENTS, PATHS AND VEHICLE CROSSINGS TO BE BACKFILLED WITH FCR.
2.

ALL EXISTING PITS AND MANHOLES WITHIN NEW WORKS TO BE ADJUSTED TO NEATLY MATCH NEW FINISHED SURFACE.
3.

ALL EXISTING SEWER BRANCHES AND HOUSE DRAINS DAMAGED BY WORKS TO BE REPLACED BY CONTRACTOR.
4.

ALL EXISTING OPEN DRAINS TO BE DRAINED, DESLUGHED AND BACKFILLED TO LEVEL 1 REQUIREMENTS.
5.

ALL PRAM CROSSING TO BE DOA COMPLIANT.
6.

VEHICLE EXCLUSION MEASURES BETWEEN RESERVE AND ROAD RESERVE TO FORM PART OF LANDSCAPE WORKS.
7.

ALL COORDINATES ARE TO AHD
8.

THE USE OF DIRECTIONAL AND HAZARD PAVEMENT MARKERS MUST ACCORD WITH SECTION 22.3.1 OF AS/NZS 1428.4:2002
9.

CONTRACTOR TO CONFIRM WITH TAYLORS REPRESENTATIVE PRIOR TO THE REMOVAL OF ANY TREES.
10.

PIT DIMENSIONS SHOWN ON PLANS, REFER TO PIT BASE.
11.

CONTRACTOR TO LOCATE ALL EXISTING ASSETS PRIOR TO COMMENCEMENT OF CONSTRUCTION. ANY DAMAGE TO EXISTING ASSETS TO BE RECTIFIED AT CONTRACTORS EXPENSE.
12.

CONTRACTOR TO VERIFY DEPTH OF EXISTING SERVICES, PRIOR TO COMMENCEMENT OF CONSTRUCTION.

SERVICE OFFSET TABLE												
STREET	GAS		RECYCLED WATER (NDW)		POTABLE WATER (DW)		TELECOMS		ELECTRICAL CABLES		SEWER	
	SIDE	OFFSET	SIDE	OFFSET	SIDE	OFFSET	SIDE	OFFSET	SIDE	OFFSET	SIDE	OFFSET
ENGLISH STREET (LOT 444)	SOUTH	3.60m	SOUTH	4.20m	SOUTH	4.80m	NORTH	3.30m	NORTH	4.10m	NORTH / SOUTH	1.00m
ENGLISH STREET (LOT 445-451)	SOUTH	3.60m	SOUTH	4.20m	SOUTH	4.80m	NORTH	3.30m	NORTH	4.10m	NORTH	1.00m
ENGLISH STREET (LOT 452)	SOUTH	3.60m	SOUTH	4.20m	SOUTH	4.80m	NORTH	3.30m	NORTH	4.10m	NORTH / SOUTH	1.00m
SOMME STREET	SOUTH	2.10m	SOUTH	2.60m	SOUTH	3.10m	NORTH	1.80m	NORTH	2.60m	NORTH / SOUTH	1.00m
GOWER STREET	SOUTH	2.10m	SOUTH	2.60m	SOUTH	3.10m	NORTH	1.80m	NORTH	2.60m	NORTH	1.00m
BEEWAR STREET - SOUTH (LOTS 435-439)	EAST	2.10m	EAST	2.60m	EAST	3.10m	WEST	1.80m	WEST	2.60m	WEST	1.00m
BEEWAR STREET - NORTH (LOTS 440-443)	WEST	2.10m	WEST	2.60m	WEST	3.10m	EAST	1.10m	EAST	1.90m	WEST	1.00m
VAUX STREET	NORTH	0.95m	NORTH	1.45m	NORTH	1.95m	SOUTH	1.775m	SOUTH	2.60m	SOUTH	1.00m
CROMBIE STREET	SOUTH	2.10m	SOUTH	2.60m	SOUTH	3.10m	NORTH	1.80m	NORTH	2.45m	NORTH	1.00m
PLIMSOLL STREET	WEST	2.10m	WEST	2.60m	WEST	3.10m	EAST	1.80m	EAST	2.60m	WEST	1.00m
HALLRAY ROAD (LOTS 406-407)	EAST	2.10m	EAST	2.60m	EAST	3.10m	WEST	1.80m	WEST	2.60m	EAST	1.00m
HALLRAY ROAD (LOTS 408-410)	EAST	2.10m	EAST	2.60m	EAST	3.10m	WEST	1.80m	WEST	2.60m	WEST	1.00m
AMESS AVENUE	EAST	2.10m	EAST	2.60m	EAST	3.10m	WEST	2.10m	WEST	2.90m	EAST / WEST	1.00m

TBM SCHEDULE			
TYPE	EASTING	NORTHING	RL
STAR PICKET	315661.19	5841910.59	250.03
SPIKE	316172.31	5841843.39	248.58
SPIKE	316865.23	5842954.55	242.85

CONTRACTOR

DIAL BEFORE YOU DIG

www.1100.com.au

WARNING

BWARE OF UNDERGROUND SERVICES

THE LOCATIONS OF UNDERGROUND SERVICES ARE APPROXIMATE ONLY AND THEIR EXACT POSITION SHOULD BE PROVIDED ON SITE. NO GUARANTEE IS GIVEN THAT ALL EXISTING SERVICES ARE SHOWN. A MOCs ENQUIRY ON 1100 MUST BE MADE BY THE CONTRACTOR PRIOR TO COMMENCEMENT OF WORKS.

WARNING

IT IS THE RESPONSIBILITY OF THE CONTRACTOR TO VERIFY THE SETOUT INFORMATION PROVIDED ON THIS PLAN WITH THE DESIGN INTENT WHICH INCLUDES, BUT IS NOT LIMITED TO ITEMS SUCH AS LENGTHS, CO-ORDINATES, SETOUT DIMENSIONS AND PEGGED TITLES BY THE PRINCIPAL'S LICENSED SURVEYOR.

CONSTRUCTION ISSUE

0

08/02/2024

ISSUED FOR CONSTRUCTION

ROK

APPD:

EXISTING GAS MAIN

EXISTING WATER MAIN

EXISTING ELECTRICITY CABLE

EXISTING TELCO CABLE & PIT

EXISTING SEWER MAIN & M.H.

EXISTING DRAIN & PIT

PROPOSED GAS & WATER CONDUIT

PROPOSED GAS MAIN

PROPOSED WATER MAIN

PROPOSED ELECTRICITY CABLE

PROPOSED TELCO CABLE

PROPOSED SEWER MAIN & M.H.

PROPOSED DRAIN PIT & PROPERTY INLET

STREET NAME SIGN

TGSI (TACTILE GROUND SURFACE INDICATORS)

PROPOSED CATCHMENTS DRAIN

FILLING ON LOTS DEEPER THAN 200mm

EXISTING SURFACE LEVEL

FINISHED SURFACE LEVEL

FINISHED SURFACE BATTER

COORDS: MGA

LEVELS: AHD

TAYLORS

Urban Development | Infrastructure

8 / 270 Ferntree Gully Road, Notting Hill, Victoria, 3168

Tel: 61 3 9501 2800 | Web: taylorso.com.au

DESIGNED: S.PAUL

REG. ENGINEER: J.YALDEN

DRAFTED: R.GRBAC

CHECKED: R.KOZUL

PE REG. No: 0003270

CAD REF: 01091-04-E-109

HUME CITY COUNCIL

225 DONNYBROOK ROAD, MICKLEHAM

MERRIFIELD RESIDENTIAL, STAGE 4

DETAIL LAYOUT PLAN

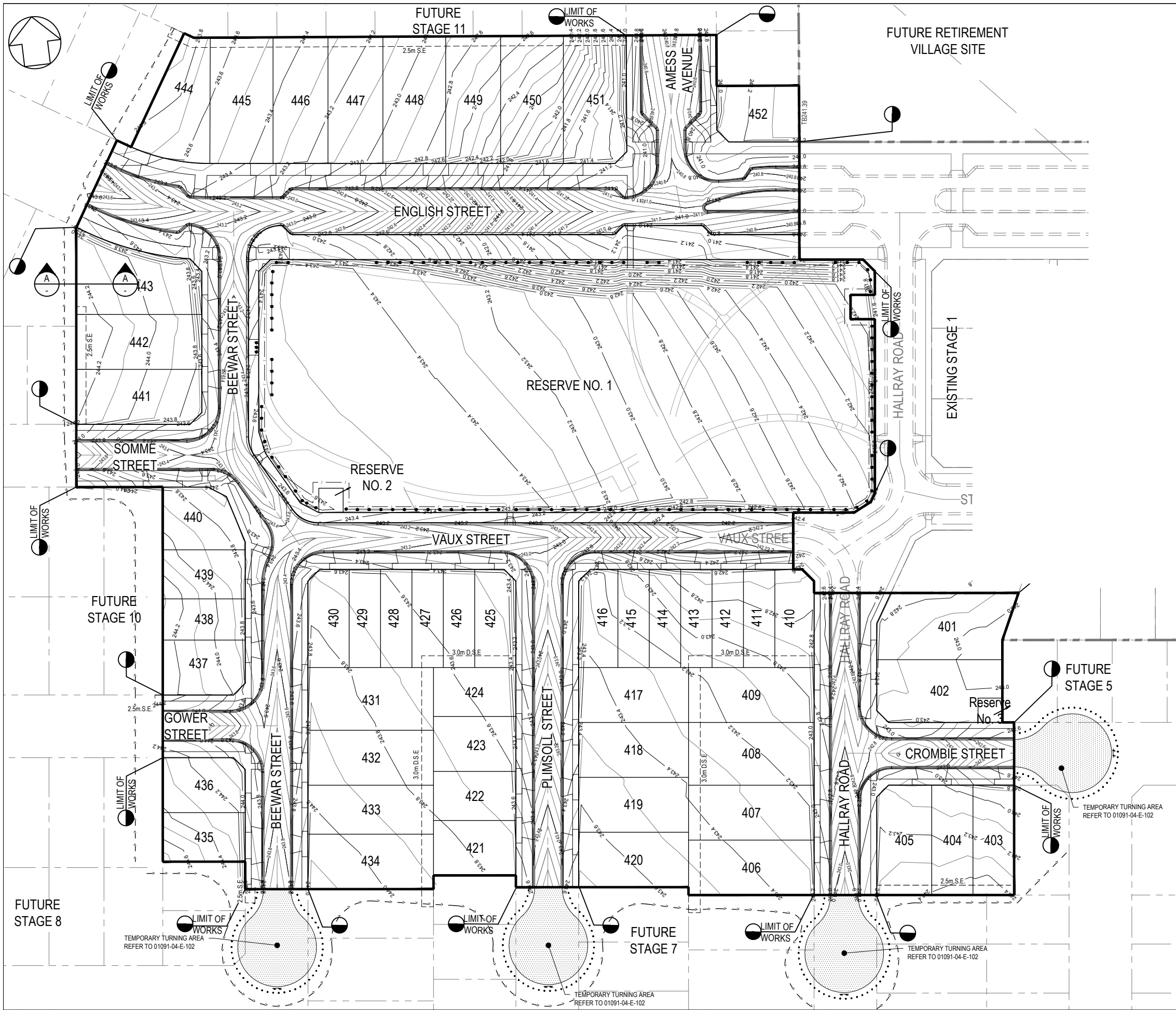
SCALE 1:500 @A1

VERSION 0

SHEET 8 OF 46

DRAWING No.

01091-04-E-109



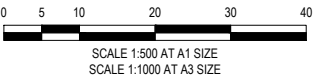
TBM SCHEDULE			
TYPE	EASTING	NORTHING	RL
STAR PICKET	315661.19	5841910.59	250.03
SPIKE	316172.31	5841843.39	248.58
SPIKE	316865.23	5842954.55	242.85

CONTRACTOR


www.1100.com.au

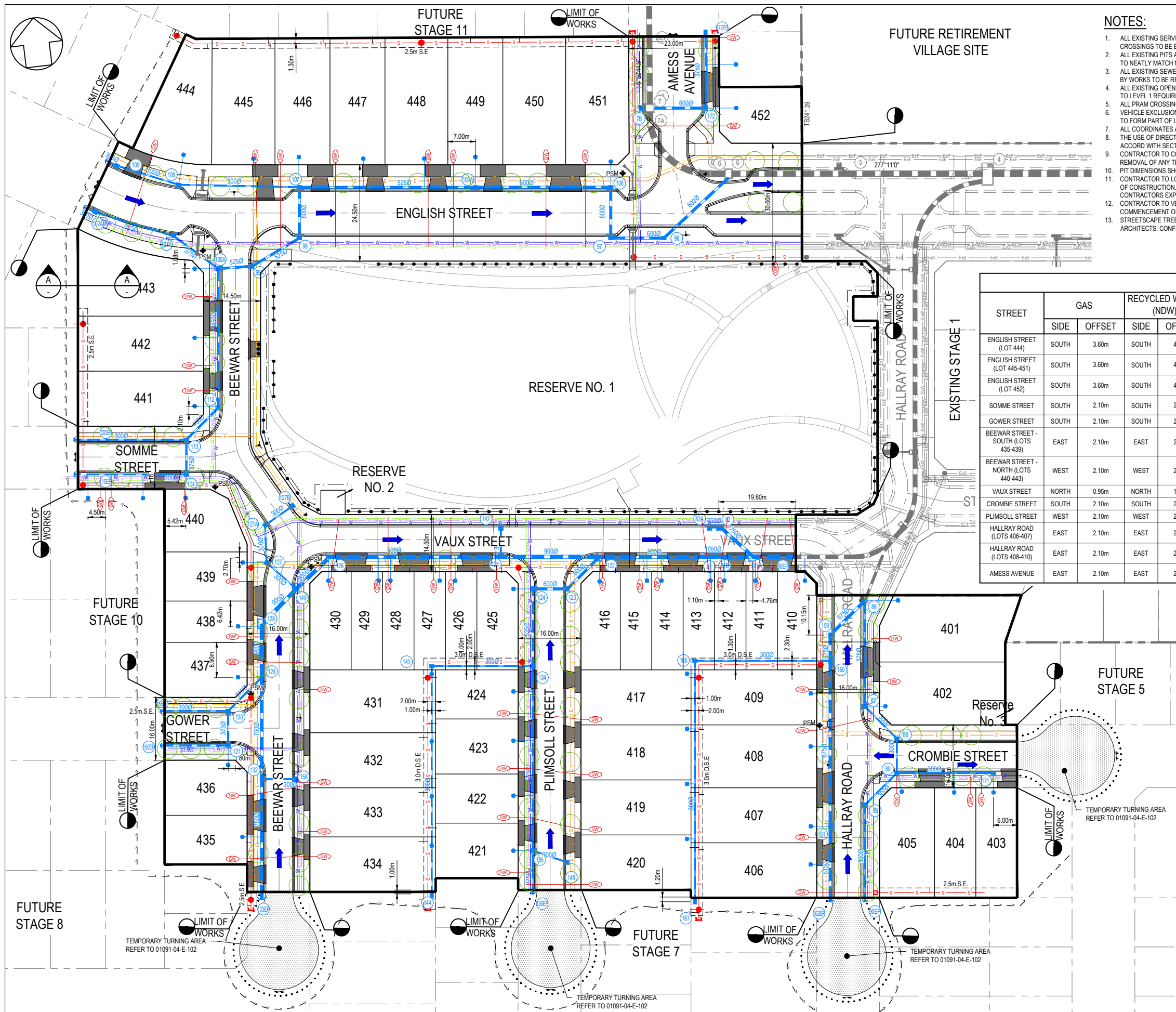
WARNING
BEWARE OF UNDERGROUND SERVICES
THE LOCATIONS OF UNDERGROUND SERVICES ARE APPROXIMATE ONLY AND THEIR EXACT POSITION SHOULD BE PROVED ON SITE. NO GUARANTEE IS GIVEN THAT ALL EXISTING SERVICES ARE SHOWN. A MOCS ENQUIRY ON 1100 MUST BE MADE BY THE CONTRACTOR PRIOR TO COMMENCEMENT OF WORKS.

WARNING
IT IS THE RESPONSIBILITY OF THE CONTRACTOR TO VERIFY THE SETOUT INFORMATION PROVIDED ON THIS PLAN WITH THE DESIGN INTENT WHICH INCLUDES, BUT IS NOT LIMITED TO ITEMS SUCH AS LENGTHS, CO-ORDINATES, SETOUT DIMENSIONS AND PEGGED TITLES BY THE PRINCIPAL'S LICENSED SURVEYOR.



CONSTRUCTION ISSUE

--	--	--	--	--	--	--	--	--	--	--	--	--	--	--	--	--	--	--	--	--	--	--	--	--	--	--	--	--	--	--	--	--	--	--	--	--	--	--	--	--	--	--	--	--	--	--	--	--	--	--	--	--	--	--	--	--	--	--	--	--	--	--	--	--	--	--	--	--	--	--	--	--	--	--	--	--	--	--	--	--	--	--	--	--	--	--	--	--	--	--	--	--	--	--	--	--	--	--	--	--	--	--	--	--	--	--	--	--	--	--	--	--	--	--	--	--	--	--	--	--	--	--	--	--	--	--	--	--	--	--	--	--	--	--	--	--	--	--	--	--	--	--	--	--	--	--	--	--	--	--	--	--	--	--	--	--	--	--	--	--	--	--	--	--	--	--	--	--	--	--	--	--	--	--	--	--	--	--	--	--	--	--	--	--	--	--	--	--	--	--	--	--	--	--	--	--	--	--	--	--	--	--	--	--	--	--	--	--	--	--	--	--	--	--	--	--	--	--	--	--	--	--	--	--	--	--	--	--	--	--	--	--	--	--	--	--	--	--	--	--	--	--	--	--	--	--	--	--	--	--	--	--	--	--	--	--	--	--	--	--	--	--	--	--	--	--	--	--	--	--	--	--	--	--	--	--	--	--	--	--	--	--	--	--	--	--	--	--	--	--	--	--	--	--	--	--	--	--	--	--	--	--	--	--	--	--	--	--	--	--	--	--	--	--	--	--	--	--	--	--	--	--	--	--	--	--	--	--	--	--	--	--	--	--	--	--	--	--	--	--	--	--	--	--	--	--	--	--	--	--	--	--	--	--	--	--	--	--	--	--	--	--	--	--	--	--	--	--	--	--	--	--	--	--	--	--	--	--	--	--	--	--	--	--	--	--	--	--	--	--	--	--	--	--	--	--	--	--	--	--	--	--	--	--	--	--	--	--	--	--	--	--	--	--	--	--	--	--	--	--	--	--	--	--	--	--	--	--	--	--	--	--	--	--	--	--	--	--	--	--	--	--	--	--	--	--	--	--	--	--	--	--	--	--	--	--	--	--	--	--	--	--	--	--	--	--	--	--	--	--	--	--	--	--	--	--	--	--	--	--	--	--	--	--	--	--	--	--	--	--	--	--	--	--	--	--	--	--	--	--	--	--	--	--	--	--	--	--	--	--	--	--	--	--	--	--	--	--	--	--	--	--	--	--	--	--	--	--	--	--	--	--	--	--	--	--	--	--	--	--	--	--	--	--	--	--	--	--	--	--	--	--	--	--	--	--	--	--	--	--	--	--	--	--	--	--	--	--	--	--	--	--	--	--	--	--	--	--	--	--	--	--	--	--	--	--	--	--	--	--	--	--	--	--	--	--	--	--	--	--	--	--	--	--	--	--	--	--	--	--	--	--	--	--	--	--	--	--	--	--	--	--	--	--	--	--	--	--	--	--	--	--	--	--	--	--	--	--	--	--	--	--	--	--	--	--	--	--	--	--	--	--	--	--	--	--	--	--	--	--	--	--	--	--	--	--	--	--	--	--	--	--	--	--	--	--	--	--	--	--	--	--	--	--	--	--	--	--	--	--	--	--	--	--	--	--	--	--	--	--	--	--	--	--	--	--	--	--	--	--	--	--	--	--	--	--	--	--	--	--	--	--	--	--	--	--	--	--	--	--	--	--	--	--	--	--	--	--	--	--	--	--	--	--	--	--	--	--	--	--	--	--	--	--	--	--	--	--	--	--	--	--	--	--	--	--	--	--	--	--	--	--	--	--	--	--	--	--	--	--	--	--	--	--	--	--	--	--	--	--	--	--	--	--	--	--	--	--	--	--	--	--	--	--	--	--	--	--	--	--	--	--	--	--	--	--	--	--	--	--	--	--	--	--	--	--	--	--	--	--	--	--	--	--	--	--	--	--	--	--	--	--	--	--	--	--	--	--	--	--	--	--	--	--	--	--	--	--	--	--	--	--	--	--	--	--	--	--	--	--	--	--	--	--	--	--	--	--	--	--	--	--	--	--	--	--	--	--	--	--	--	--	--	--	--	--	--	--	--	--	--	--	--	--	--	--	--	--	--	--	--	--	--	--	--	--	--	--	--	--	--	--	--	--	--	--	--	--	--	--	--	--	--	--	--	--	--	--	--	--	--	--	--	--	--	--	--	--	--	--	--	--	--	--	--	--	--	--	--	--	--	--	--	--	--	--	--	--	--	--	--	--	--	--	--	--	--	--	--	--	--	--	--	--	--	--	--	--	--	--	--	--	--	--	--	--	--	--	--	--	--	--	--	--	--	--	--	--	--	--	--	--	--	--	--	--	--	--	--	--	--	--	--	--	--	--	--	--	--	--	--	--	--	--	--	--	--	--	--	--	--	--	--	--	--	--	--	--	--	--	--	--	--	--	--	--	--	--	--	--	--	--	--	--	--	--	--	--	--	--	--	--	--	--	--	--	--	--	--	--	--	--	--	--	--	--	--	--	--	--	--	--	--	--	--	--	--	--	--	--	--	--	--	--	--	--	--	--	--	--	--	--	--	--	--	--	--	--	--	--	--	--	--	--	--	--	--	--	--	--	--	--	--	--	--	--	--	--	--	--	--	--	--	--	--	--	--	--	--	--	--	--	--	--	--	--	--	--	--	--	--	--	--	--	--	--	--	--	--	--	--	--	--	--	--	--	--	--	--	--	--	--	--	--	--	--	--	--	--	--	--	--	--	--	--	--	--	--	--	--	--	--	--	--	--	--	--	--	--	--	--	--	--	--	--	--	--	--	--	--	--	--	--	--	--	--	--	--	--	--	--	--	--	--	--	--	--	--	--	--	--	--	--	--	--	--	--	--	--	--	--	--	--	--	--	--	--	--	--	--	--	--	--	--	--	--	--	--	--	--	--	--	--	--	--	--	--	--	--	--	--	--	--	--	--	--	--	--	--	--	--	--	--	--	--	--	--	--	--	--	--	--	--	--	--	--	--	--	--	--	--	--	--	--	--	--	--	--	--	--	--	--	--	--	--	--	--	--	--	--	--	--	--	--	--	--	--	--	--	--	--	--	--	--	--	--	--	--	--	--	--	--	--	--	--	--	--	--	--	--	--	--	--	--	--	--	--	--	--	--	--	--	--



NOTES:

1. ALL EXISTING SERVICES UNDER NEW PAVEMENTS, PATHS AND VEHICLE CROSSINGS TO BE BACKFILLED WITH FCR.
2. ALL EXISTING PITS AND MANHOLES WITHIN NEW WORKS TO BE ADJUSTED TO NEATLY MATCH NEW FINISHED SURFACE.
3. ALL EXISTING SEWER PROPERTY BRANCHES AND HOUSE DRAINS DAMAGED BY WORKS TO BE REPLACED BY CONTRACTOR.
4. ALL EXISTING OPEN DRAINS TO BE DRAINED, DESLUGGED AND BACKFILLED TO LEVEL 1 REQUIREMENTS.
5. ALL PRAM CROSSING TO BE DOA COMPLIANT.
6. VEHICLE EXCLUSION MEASURES BETWEEN RESERVE AND ROAD RESERVE TO FORM PART OF LANDSCAPE WORKS.
7. ALL COORDINATES ARE TO AHD.
8. THE USE OF DIRECTIONAL AND HAZARD PAVEMENT MARKERS MUST ACCORD WITH SECTION 2.2.3.1 OF AS/NZS 1428.4.2002
9. CONTRACTOR TO CONFIRM WITH TAYLORS REPRESENTATIVE PRIOR TO THE REMOVAL OF ANY TREES.
10. PIT DIMENSIONS SHOWN ON PLANS. REFER TO PIT BASE.
11. CONTRACTOR TO LOCATE ALL EXISTING ASSETS PRIOR TO COMMENCEMENT OF CONSTRUCTION. ANY DAMAGE TO EXISTING ASSETS TO BE RECTIFIED AT CONTRACTORS EXPENSE.
12. CONTRACTOR TO VERIFY DEPTH OF EXISTING SERVICES, PRIOR TO COMMENCEMENT OF CONSTRUCTION.
13. STREETSCAPE TREES SHOWN ARE PROVIDED BY TRACT LANDSCAPE ARCHITECTS. CONFIRM FINAL TREE LOCATIONS WITH TRACT.

CONSERVATION RESERVE

NO ACCESS IS PERMITTED INTO THE EXISTING CONSERVATION RESERVE LOCATED TO THE WEST OF THE PROPOSED DEVELOPMENT TO ANY PARTIES AT ANY TIME.

SERVICE OFFSET TABLE

STREET	GAS		RECYCLED WATER (NDW)		POTABLE WATER (DW)		TELECOMS		ELECTRICAL CABLES		SEWER	
	SIDE	OFFSET	SIDE	OFFSET	SIDE	OFFSET	SIDE	OFFSET	SIDE	OFFSET	SIDE	OFFSET
ENGLISH STREET (LOT 444)	SOUTH	3.60m	SOUTH	4.20m	SOUTH	4.80m	NORTH	3.30m	NORTH	4.10m	NORTH / SOUTH	1.00m
ENGLISH STREET (LOT 445-451)	SOUTH	3.60m	SOUTH	4.20m	SOUTH	4.80m	NORTH	3.30m	NORTH	4.10m	NORTH	1.00m
ENGLISH STREET (LOT 452)	SOUTH	3.60m	SOUTH	4.20m	SOUTH	4.80m	NORTH	3.30m	NORTH	4.10m	NORTH / SOUTH	1.00m
SOMME STREET	SOUTH	2.10m	SOUTH	2.60m	SOUTH	3.10m	NORTH	1.80m	NORTH	2.60m	NORTH / SOUTH	1.00m
GOWER STREET	SOUTH	2.10m	SOUTH	2.60m	SOUTH	3.10m	NORTH	1.80m	NORTH	2.60m	NORTH	1.00m
BEEWAR STREET - SOUTH (LOTS 435-439)	EAST	2.10m	EAST	2.60m	EAST	3.10m	WEST	1.80m	WEST	2.60m	WEST	1.00m
BEEWAR STREET - NORTH (LOTS 440-443)	WEST	2.10m	WEST	2.60m	WEST	3.10m	EAST	1.10m	EAST	1.90m	WEST	1.00m
VAUX STREET	NORTH	0.95m	NORTH	1.45m	NORTH	1.95m	SOUTH	1.775m	SOUTH	2.60m	SOUTH	1.00m
CROMBIE STREET	SOUTH	2.10m	SOUTH	2.60m	SOUTH	3.10m	NORTH	1.80m	NORTH	2.45m	NORTH	1.00m
PLIMSOLL STREET	WEST	2.10m	WEST	2.60m	WEST	3.10m	EAST	1.80m	EAST	2.60m	WEST	1.00m
HALLRAY ROAD (LOTS 406-407)	EAST	2.10m	EAST	2.60m	EAST	3.10m	WEST	1.80m	WEST	2.60m	EAST	1.00m
HALLRAY ROAD (LOTS 408-410)	EAST	2.10m	EAST	2.60m	EAST	3.10m	WEST	1.80m	WEST	2.60m	WEST	1.00m
AMESS AVENUE	EAST	2.10m	EAST	2.60m	EAST	3.10m	WEST	2.10m	WEST	2.90m	EAST / WEST	1.00m

TBM SCHEDULE

TYPE	EASTING	NORTHING	RL
STAR PICKET	315661.19	5841910.59	250.03
SPIKE	316172.31	5841843.39	248.58
SPIKE	316865.23	5842954.55	242.85

CONTRACTOR

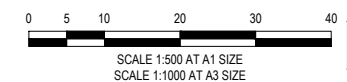


WARNING

BWARE OF UNDERGROUND SERVICES
THE LOCATIONS OF UNDERGROUND SERVICES ARE APPROXIMATE ONLY AND THEIR EXACT POSITION SHOULD BE PROVED ON SITE. NO GUARANTEE IS GIVEN THAT ALL EXISTING SERVICES ARE SHOWN. A MOCS ENQUIRY ON 1100 MUST BE MADE BY THE CONTRACTOR PRIOR TO COMMENCEMENT OF WORKS.

WARNING

IT IS THE RESPONSIBILITY OF THE CONTRACTOR TO VERIFY THE SETOUT INFORMATION PROVIDED ON THIS PLAN WITH THE DESIGN INTENT WHICH INCLUDES, BUT IS NOT LIMITED TO ITEMS SUCH AS LENGTHS, CO-ORDINATES, SETOUT DIMENSIONS AND PEGGED TITLES BY THE PRINCIPAL'S LICENSED SURVEYOR.



CONSTRUCTION ISSUE

			TAYLORS Urban Development Infrastructure 8 / 270 Ferrisree Gully Road, Notting Hill, Victoria, 3168 Tel: 61 3 9501 2800 Web: taylors.com.au			HUME CITY COUNCIL 225 DONNYBROOK ROAD, MICKLEHAM MERRIFIELD RESIDENTIAL, STAGE 4 PROPOSED SERVICES PLAN			SCALE 1:500 @A1 VERSION 0 SHEET 12 OF 46 DRAWING No. 01091-04-E-111	
DESIGNED:	S. PAUL	REG. ENGINEER:	J. YALDEN	DRAFTED:	R. GRBAC					
CHECKED:	R. KOZUL	PE REG. No:	0003270	CAD REF:	01091-04-E-111					