

Merrifield



Landscape
Packages



Creating beautiful neighbourhoods

Merrifield is a high quality living environment that marries natural beauty with the best of contemporary urban design.

It starts with stunning streetscapes - carefully designed to connect our residents to lush parklands, waterways and community facilities.

A well-designed and elegantly landscaped front garden adds the perfect finishing touch to your new dream home, whilst also helping to contribute to a cohesive and beautiful place to live!

That's why we offer a free front landscaping service for every new home valued up to \$10,000! Be inspired and choose one of the three garden styles that have been specifically designed for Merrifield by award-winning MDG Landscape Architects.

Once your home is complete, you can just sit back and let us do the hard work for you!

Choosing your front garden landscape package

Follow these four easy steps for the front garden that best complements your home.

1 Review the landscaping packages

Take a look at the garden design styles included in this brochure; each one includes different layouts and plant types.

2 Select your preferred design

Choose the landscape style and corresponding tree species you prefer and submit the Landscape Selection Form via:

- the My Merrifield portal at merrifieldmelbourne.com.au/myhome
- or email MerrifieldDRC@MerrifieldMelbourne.com.au

3 Submit your Landscape Request Form

Once construction of your new home (including all hardscape) has been completed, submit the Landscape Request Form along with your Certificate of Occupancy and photos of the front of your property via:

- the My Merrifield portal at merrifieldmelbourne.com.au/myhome
- or email MerrifieldDRC@MerrifieldMelbourne.com.au

4 We will contact you

The Merrifield Living Design Review Committee (MLDRC), will then be in touch to commence work on your new front garden. Your beautiful new garden will be complete within 8–12 weeks.



Choose the garden style that best suits you



The three garden designs incorporate a mix of both hardy natives and exotic plants, selected for colour, flower, texture and shape as well as their ease of maintenance.

Plants, flowering shrubs and paving have been carefully laid out to create an attractive design which work together to enhance the presentation of your new home.

Once it's all finished you can sit back and enjoy watching your new garden settle and grow.

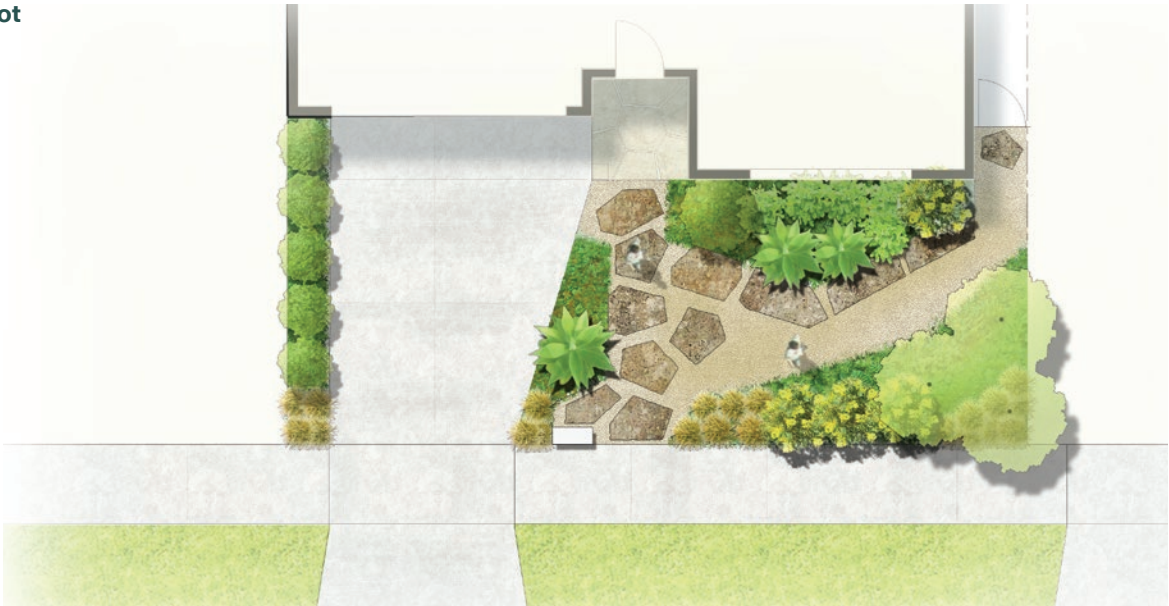
Free front landscaping provided to every home.
Valued up to \$10,000*

* Terms and conditions apply.

Informal


This garden design features native plants and natural stone pavers set in gravel. The loose groups of plants give you the feeling of a bush setting and the native plants not only look good but are easy to take care of.

Standard Lot




Corner Lot







Multi-trunk tree / Group of trees



Large shrub




Medium / Small shrub




Accent planting




Tufting planting




Groundcover



Stone steppers



Gravel paving



Letterbox (to be installed by owner)

Large Shrubs



Medium and Small Shrubs



Accent



Tufting



Groundcovers



- | | | | | | | | |
|---|---|---|--|----|---|----|---|
| 1 | Bower Wattle 'Lime Magik'
<i>Acacia cognata</i> | 6 | Dwarf Sticky Wattle <i>Acacia howittii</i> 'Honey Bun' | 10 | Red Hot Poker Winter Cheer
<i>Kniphofia</i> 'Winter Cheer' | 15 | Grevillea Gold Cluster
<i>Grevillea juniperina</i> 'Gold Cluster' |
| 2 | 'Safari Gold Strike'
<i>Leucadendron salignum</i> | 7 | Correa Ivory Lantern
<i>Correa glabra</i> | 11 | Swamp Foxtail <i>Pennisetum alopecuroides</i> 'Nafray' | 16 | Shore Juniper
<i>Juniperus conferta</i> |
| 3 | 'Moon Lagoon'
<i>Eucalyptus latens</i> | 8 | Prostrate Cootamundra Wattle <i>Acacia baileyana</i> 'Prostrate' Form' | 12 | Mat Rush Katie Belles
<i>Lomandra hystrix</i> 'Katie Belles' | 17 | Prostrate Red Honey-Myrtle
<i>Melaleuca hypericifolia</i> 'Ulladulla Beacon' |
| 4 | Little Nugget Wattle <i>Acacia pravissima</i> 'Little Nugget' | 9 | Astelia Silver Spears <i>Astelia chathamica</i> 'Silver Spears' | 13 | Blue Sedge <i>Carex flacca</i> | | |
| 5 | Peaches & Cream Grevillea
<i>Grevillea</i> | | | 14 | African Daisy Flame
<i>Arctotis</i> 'Flame' | | |

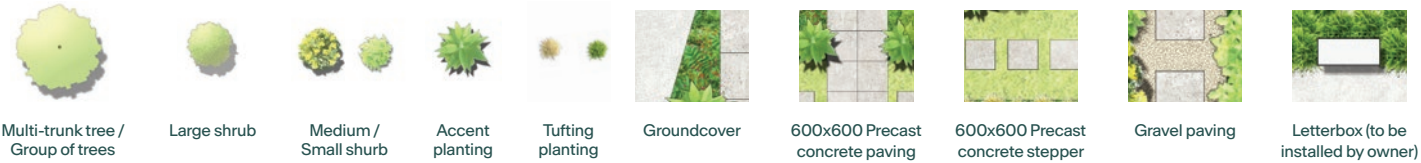
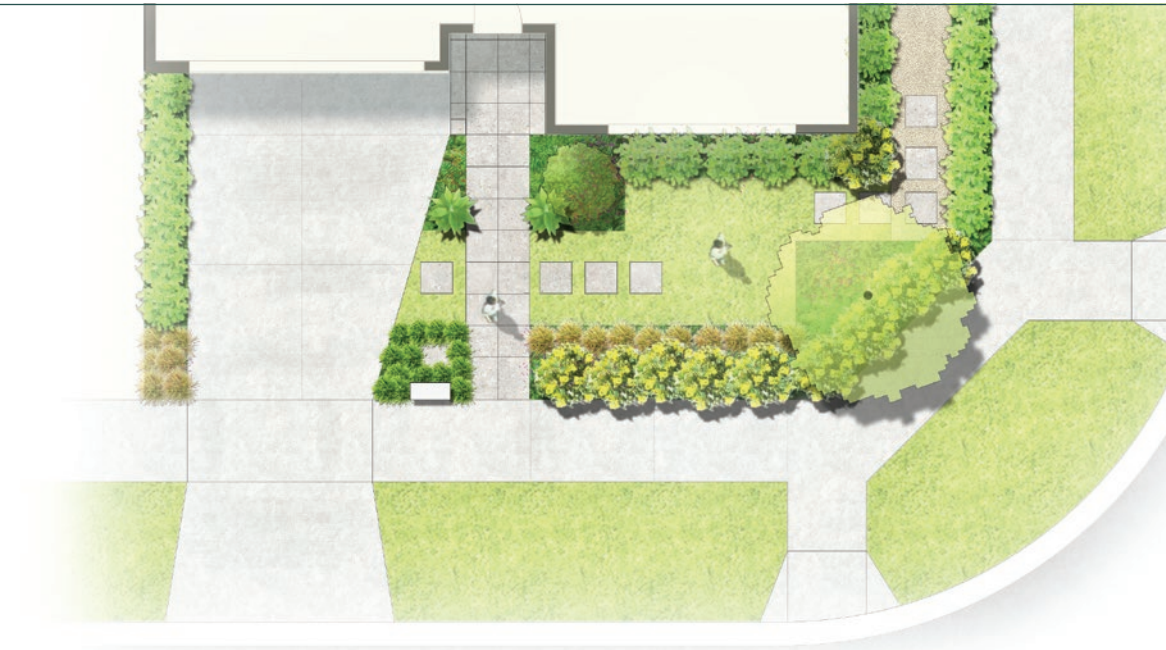
Geometric

This is a more traditional garden with garden beds and concrete paving. A central lawn provides a traditional feel while shrubs with natural forms of groundcovers and tussocks add interest all year-round.

Standard Lot



Corner Lot



Large Shrubs



Medium and Small Shrubs



Accent



Tufting



Groundcovers



- | | | | |
|--|---|---|---|
| 1 Lilly Pilly Dwarf <i>Acmena smithii</i> 'Hot Flush' | 5 Willow-Leaf Bottlebrush <i>Callistemon salignus</i> 'Great Balls of Fire' | 10 Gynea Lily <i>Doryanthes excelsa</i> | 15 Prostrate Rosemary <i>Rosmarinus officinalis prostratus</i> |
| 2 Mexican Orange Blossom <i>Choisya ternata</i> | 6 Peaches & Cream Grevillea <i>Grevillea</i> | 11 Adam's Needle <i>Yucca filamentosa</i> | 16 Cherry Cluster Grevillea <i>Grevillea rhyolitica x uniperina</i> |
| 3 Pride of Madiera <i>Echium candicans</i> | 7 Statice <i>Limonium perezii</i> | 12 Lime Tuff Lomandra <i>Lomandra</i> 'Lime Tuff' | 17 Shore Juniper <i>Juniperus conferta</i> |
| 4 Limelight Pittosporum <i>Pittosporum</i> 'Limelight' | 8 Aussie Box <i>Westringia</i> 'Aussie box' | 13 Blue Sedge <i>Carex flacca</i> | 18 Prostrate Westringia <i>Westringia</i> 'Flat n Fruity' |
| | 9 Kaffir Lily <i>Clivia miniata</i> | 14 Mondo Grass <i>Ophiopogon japonicu</i> | |

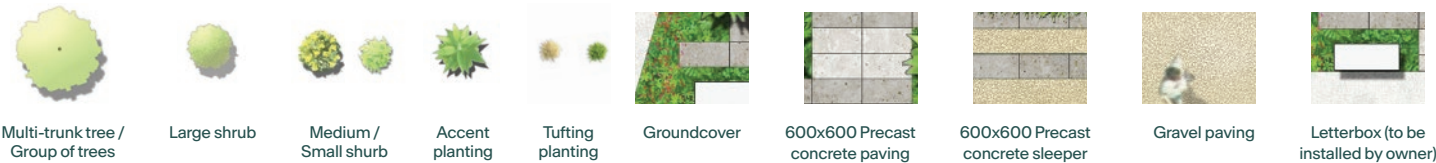
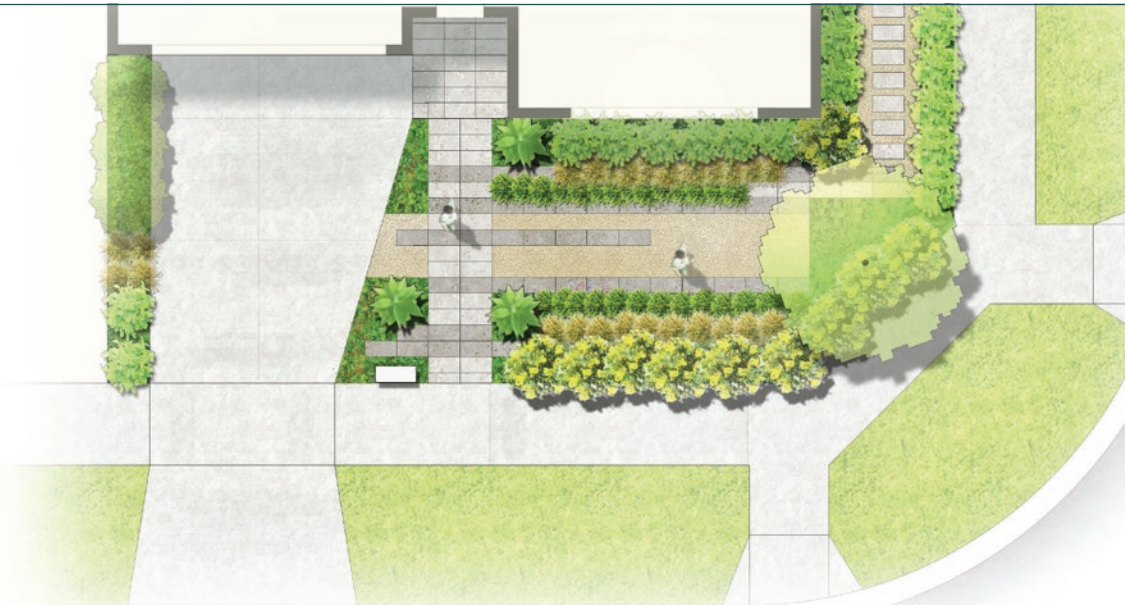
Linear

This design features contrasting paving stones bordered by large and medium sized shrubs. The native and exotic shrubs, grasses and groundcovers make this a low maintenance garden.

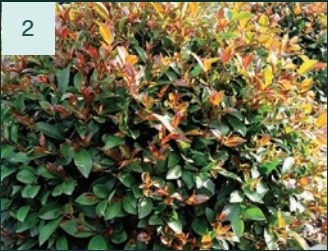
Standard Lot



Corner Lot



Large Shrubs



Medium and Small Shrubs



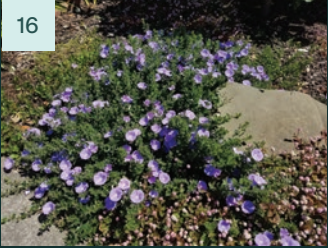
Accent



Tufting



Groundcovers



- | | | | | | | | |
|---|--|---|--|----|--|----|---|
| 1 | <i>Pittosporum tenuifolium</i>
'Green Pillar' | 5 | Scarlet Flame Bottlebrush
<i>Callistemon viminalis</i> | 10 | Bronze Baby N.Z. Flax
<i>Phormium</i> 'Bronze Baby' | 15 | Thrift <i>Armeria maritima</i> |
| 2 | Lilly Pilly Aussie Copper
<i>Syzygium australe</i>
'Aussie Copper' | 6 | <i>Grevillea</i> 'Superb' | 11 | Bird of Paradise <i>Strelitzia reginae</i> | 16 | Ground Morning Glory
<i>Convolvulus mauritanicus</i> |
| 3 | Coastal Rosemary
<i>Westringia longifolia</i>
'Snow Flurry' | 7 | Green John Bottlebrush
<i>Callistemon viminalis</i>
'Green John' | 12 | Native Flax <i>Dianella caerulea</i>
'Little Jess' | 17 | Autumn Joy Sedum <i>Sedum</i>
'Autumn Joy' |
| 4 | <i>Viburnum odoratissimum</i>
'Dense Fence' | 8 | Silver Bush <i>Convolvulus cneorum</i> | 13 | Little Pal <i>Lomandra confertifolia</i> | 18 | Native Violet <i>Viola hederacea</i> |
| | | 9 | Kaffir Lily <i>Clivia miniata</i> | 14 | Blue Fox Fescue <i>Festuca glauca</i> | | |

Pick your trees

Once you’ve chosen your preferred landscape design (Informal, Geometric or Linear), choose one of the corresponding tree options below.

Informal



Lemon Scented Gum
Corymbia citriodora ‘Scentuous’



Eucalyptus caesia
‘Silver Princess’



Eucalyptus leucoxylon
‘Eukie Dwarf’

Geometric



European Olive
Olea europae



Kanooka *Tristaniopsis laurina*
‘Luscious’



Callery Pear
Pyrus calleryana ‘Capital’

Linear



Judas Tree *Cercis canadensis*
‘Forest Pansy’



Crepe Myrtle *Lagerstroemia indica* x *L.faurieri* ‘Natchez’



Native Frangipani
Hymenosporum flavum



Six steps to a beautiful garden

1	Watering Water your garden weekly as a minimum (unless you have more than 10mm of rainfall that week as garden beds can get dry even in winter, and if you don't keep the moisture up, soils can become non-wetting (hyrdro-phobic) and difficult to saturate.
2	Weeding Pull weeds out regularly so that it doesn't become an overwhelming chore. Be careful of bringing in mulches or manures which may contain lots of weed seeds.
3	Mowing and edging Warm season grasses, like kikuyu, are hardy and vigorous but require regular mowing and edging to look their best. Don't put lawn clippings on your garden or trees as piles of fresh clippings will kill your plants. We recommend putting them in your green bin to be composted by Council.
4	Fertilising Apply suitable fertiliser such as Osmocote `Long Life Fertiliser' once every 6 months. Alternatively fork through worm castings or organic compost.
5	Plant density Plants should be spaced so that full plant coverage is achieved (minimum visible mulch). The purpose of mulch is to reduce evaporation from the soil while still allowing water penetration until plants can fully cover the garden bed areas.
6	Grass Seeded or pre-grown turf grass is preferred and has a cooling effect on the ground around your home. Artificial turf heats up in the sun and will deteriorate over time and cannot be recycled (it will end up in landfill).

Landscaping FAQs

Am I eligible for a free landscape package?
Please refer to the terms and conditions of your Contract of Sale to see whether you are eligible.

When do I need to apply for the landscaping package?
You will need to complete a Landscape Request Form when you submit your building plans to the MLDRC for approval. The application form can be found in the **Merrifield Design Guidelines** or alternatively on the My Merrifield Portal at merrifieldmelbourne.com.au/my-merrifield/my-home

Do I need to provide a Certificate of Occupancy?
Yes, you will need to provide a copy of your Certificate of Occupancy prior to landscape works commencing. The MLDRC will then conduct an external inspection of your property to ensure it has been completed in accordance with the approved plans. In the event the dwelling has not been constructed in accordance with the approved plans, alterations will be needed prior to landscaping works commencing.

Where do I send my Certificate of Occupancy?
Please submit your Certificate of Occupancy and Landscape Request form to **MerrifieldDRC@MerrifieldMelbourne.com.au** or via the My Merrifield Portal at merrifieldmelbourne.com.au/my-merrifield/my-home

Does my boundary fencing need to be installed?
Yes, your boundary fencing will need to be installed prior to landscaping works commencing. Please note, boundary fencing is not permitted to extend beyond the front of your dwelling and must comply with the Merrifield Design Guidelines.

Does my driveway and letterbox need to be installed?
Yes, both your letterbox and driveway must be installed prior to landscaping works commencing. Please ensure these both comply with the Merrifield Design Guidelines.

Do I need a retaining wall?
Depending on the difference between the floor level of your home and the adjacent street, a retaining wall may be required to ensure there is a level platform for landscaping works to be completed. Plans which show the height, level and material will need to be submitted to the MLDRC for review and approval. If a retaining wall is required, it will need to be installed by you prior to the delivery of the landscaping package.

Please note, Merrifield landscaping packages do not include the installation of a retaining wall and if it is not installed, a best fit scenario will be installed or works will be delayed until the issues with levels are resolved.

Can I vary or change aspects of the landscape packages?
No, each landscape package is unable to be varied, however you are able to select a tree of your choice from the options provided.

When will my front garden be completed?
Once you've successfully submitted both the Landscape Selection Form and your Landscape Request Form, we will confirm that your dwelling has been built in accordance with your approved plans. We then anticipate works will be completed within 8 - 12 weeks. Timeframes will be subject to contractor availability and seasonal conditions.

Can residents choose to install their own garden?
Yes, residents are welcome to install their own front garden. Landscaping plans will need to be submitted by your builder/ architect when you apply for developer approval for your house plans. Landscaping works must be completed within 6 months from the issue of your Certificate of Occupancy.

Merrifield

Developed by
MAB | **GPC**

Terms and Conditions

The Owner acknowledges and accepts that in the case that Landscaping is procured by MAB and GPC.

The value of the front landscaping service is dependent on front garden area and chosen landscaping design with works in the sum of up to \$10,000. The front landscaping service includes selection of 3 front landscaping designs found here. The Owner grants to MAB and GPC and its respective contractors a licence to access the Property for the purposes of completing the Landscaping and grants MAB and GPC the right to provide their contact details to its respective contractors for the purposes of arranging landscape installation. If the Owner does not submit a Landscape Request Form, the Owner must complete the landscaping of the Property in accordance with the Merrifield Design Guidelines within 6 months of the issue of a Certificate of Occupancy for the dwelling on the Property.

The information, images and artist's impressions used in this brochure are indicative only and have been prepared solely for promotional purposes. The information contained herein has been prepared in good faith and with due care. This brochure was completed prior to completion of the design and construction of the project, therefore development details, specifications and timing are subject to change. We do not warrant the accuracy of information contained in this brochure and do not accept any liability for any error or discrepancy or negligence or otherwise in the information. (c) Copyright Ascotown Pastoral Company Pty Ltd (ACN 116 959 365), Merrifield Corporation Pty Ltd (ACN 111 110 813), Rosedust Pty Ltd (ACN 618 257 686) and Copperdust Pty Ltd (ACN 618 875 433). 2025, V1.